

# WORKING TOGETHER

**Dear visitors,**

We are delighted to see you, and to welcome you once again to our centre. The progressive reopening of the centre is being conducted in a concerted and voluntary manner, in the spirit of partnership and collaboration that characterises the way we work in our shopping centre.

Our top priority is the safety and health of our visitors and of our employees, whether they work at centre management, in our shops or amongst our service providers. With this in mind, we are complying with the recommendations of the national (French) health authorities and are carefully implementing the appropriate measures to ensure we welcome you under strict hygienic conditions.

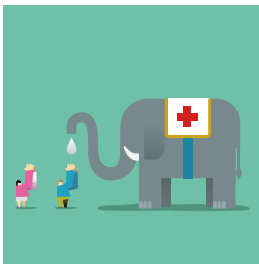
To make sure the gradual resumption of the centre's activities is entirely safe, we have collectively revised and adapted our procedures so that you can enjoy your visit in complete confidence.

# OUR COMMITMENTS



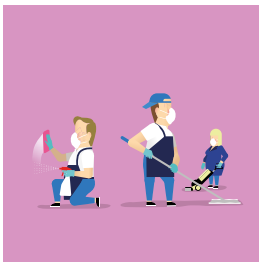
## **TO ENSURE YOU ARE WELL INFORMED:**

All centre and retailers' employees have been trained in hygiene and social distancing regulations. We have set up clear and easily identifiable signage in common areas to remind everyone of the need to adapt their behaviour and use preventive measures. Regular loudspeaker announcements remind people of these preventive measures.



## **TO ENSURE EVERYONE IS PROTECTED:**

All staff in the centre is equipped with the appropriate protection (gloves, masks and/or glasses). Hydroalcoholic gel is provided for everyone at several strategic locations within the centre (including entrances, escalators and lifts). Masks are provided for visitors, available at the reception desk/vending machines.



## **TO ENSURE COMPLIANCE WITH HYGIENE RULES:**

We apply a strict protocol and have increased the cleaning and disinfection frequency of common areas and shops. Our ventilation systems have been reconfigured to maximise permanent air renewal.



## **TO ENSURE COMPLIANCE WITH SOCIAL DISTANCING RULES:**

We have introduced a controlled access to manage the flow of visitors.  
We have modified routes for visits, with markings on the ground to indicate the appropriate distance to be maintained between visitors.  
We are offering an online booking system, to guarantee access to the centre at the desired time.  
We have modified opening hours to extend potential visiting times.  
We have reserved time slots for the most vulnerable people.  
We have temporarily closed public facilities such as rest areas or areas for children. Sanitary facilities remain accessible.